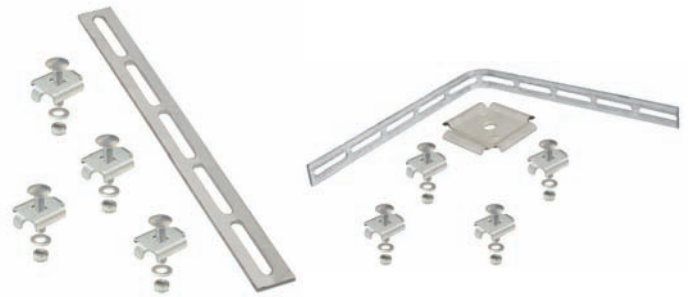
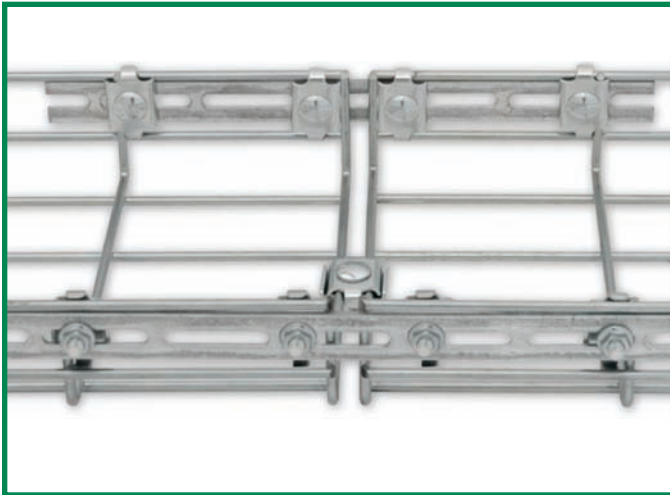


APPLICATION INSTRUCTIONS

REINFORCING SPLICE BAR

Reinforcing splice bars are used to secure lengths of tray together as well as being used to secure a number of wire mesh tray applications such as the Y intersection. (WMREMF105) (WMREMF393) (WMREMFKIT) (WM90G) (WM90BKG)



Reinforcing Splice Bar

POSITION



Position the splice bar evenly across the area to be attached.

SECURE



Secure the the bar in place using 4 bolt assemblies (WMTB250). The tops of the bolt assembly clamps should overlap the top cross wire of the tray. Use two bolt assemblies on either side of the connection.

BEND



Splice bars can also be bent to form angles. Pre-formed 90 degree splice bars are also available. Chalfant does not recommend unbending and rebending splice bars as this may structurally weaken the metal.

THIS DOCUMENT CONTAINS PROPRIETARY INFORMATION AND IS THE PROPERTY OF CHALFANT MANUFACTURING COMPANY. THE CONTENTS OF THIS DOCUMENT SHALL NOT BE DISCLOSED, COPIED AND OR PUBLISHED WITHOUT THE WRITTEN CONSENT OF CHALFANT MANUFACTURING COMPANY.

CHALFANT
Manufacturing Company

50 Pearl Road, Suite 212
Brunswick, OH. 44212
Phone: (330) 273-3510, Fax: (330) 273-8149
Web: www.ChalfantCableTray.com
Email: Sales@ChalfantCableTray.com