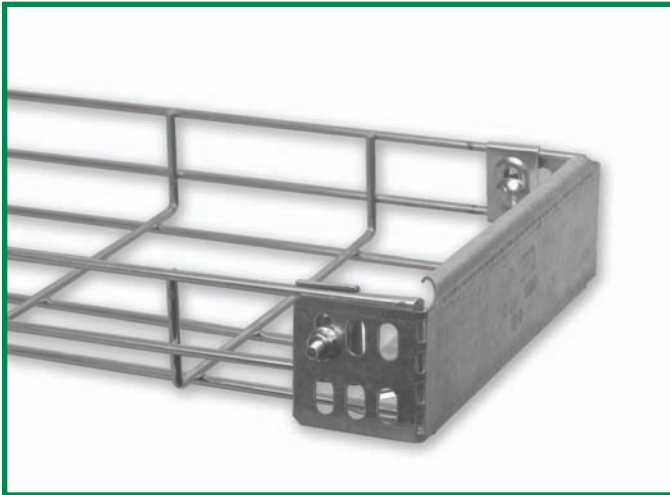


APPLICATION INSTRUCTIONS

END PLATE

End Plates are designed to safely terminate the end of a cable tray, completely sealing off open areas and protecting cables inside. (WMENDP)



End Plate

BEND



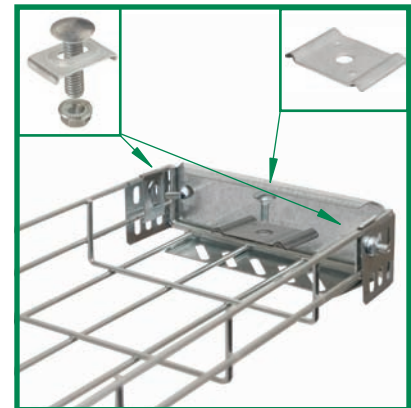
Bend the sides of the End Plate inward forming right angles.

SLIDE



Slide the end plate over the cable tray with the flaps on the outside of the tray.

SECURE



Secure the end plate using 2 Barrier Strip Clamps (WMBS) and one Holddown Clamp (WMHDC) as shown above.

THIS DOCUMENT CONTAINS PROPRIETARY INFORMATION AND IS THE PROPERTY OF CHALFANT MANUFACTURING COMPANY. THE CONTENTS OF THIS DOCUMENT SHALL NOT BE DISCLOSED, COPIED AND OR PUBLISHED WITHOUT THE WRITTEN CONSENT OF CHALFANT MANUFACTURING COMPANY.

CHALFANT
Manufacturing Company

50 Pearl Road, Suite 212
Brunswick, OH. 44212
Phone: (330) 273-3510, Fax: (330) 273-8149
Web: www.ChalfantCableTray.com
Email: Sales@ChalfantCableTray.com