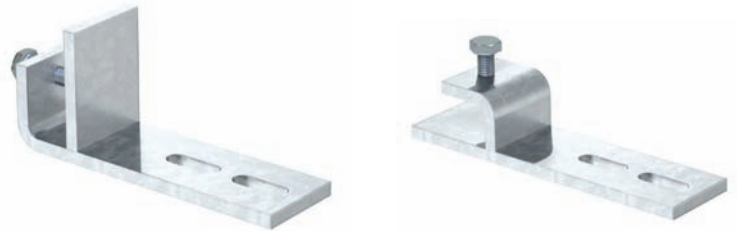


APPLICATION INSTRUCTIONS

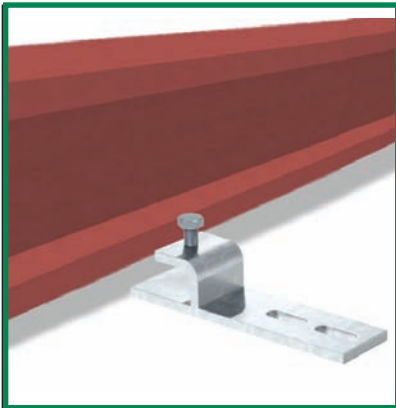
VERTICAL / HORIZONTAL BEAM SUPPORT

Chalfant's unique Vertical and Horizontal Beam Supports are used to run cable tray along I beams. (WMHBS) (WMVBS)



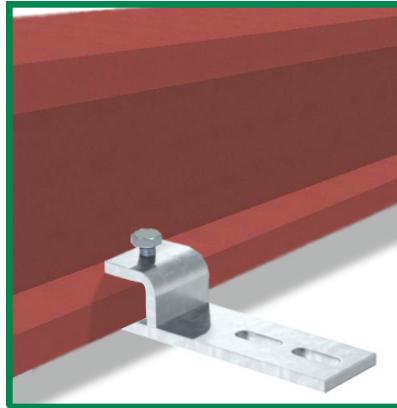
Vertical / Horizontal Beam Support

SLIDE



Slide the lip of the I beam into the open section of the Beam Support (WMHBS / WMVBS).

SECURE



Secure the Beam Support by tightening the screw on top.

MOUNT



Mount cable tray using a Hold Down Clamp (MMHDC).

THIS DOCUMENT CONTAINS PROPRIETARY INFORMATION AND IS THE PROPERTY OF CHALFANT MANUFACTURING COMPANY. THE CONTENTS OF THIS DOCUMENT SHALL NOT BE DISCLOSED, COPIED AND OR PUBLISHED WITHOUT THE WRITTEN CONSENT OF CHALFANT MANUFACTURING COMPANY.

CHALFANT
Manufacturing Company

50 Pearl Road, Suite 212
Brunswick, OH. 44212
Phone: (330) 273-3510, Fax: (330) 273-8149
Web: www.ChalfantCableTray.com
Email: Sales@ChalfantCableTray.com