

PRODUCT SPECIFICATIONS:

1. MATERIAL: GALVANIZED STEEL

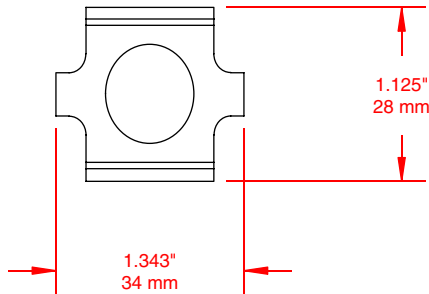
PART NUMBER	FINISH
WMTB620S	ELECTRO-GALVANIZED
WMTB620G	HOT DIPPED
WMTB620T	STAINLESS STEEL 304
WMTB620Z	STAINLESS STEEL 316



WMTB620

RECOMMENDING MOUNTING:

1. FOR STRAIGHT AND ANGLE CONNECTION OF 2" and 4" SIDE HEIGHT WIRE MESH CABLE TRAYS
2. (WMSBKIT620S) BOLT KIT INCLUDED.



THIS DOCUMENT CONTAINS PROPRIETARY INFORMATION AND IS THE PROPERTY OF CHALFANT MANUFACTURING COMPANY. THE CONTENTS OF THIS DOCUMENT SHALL NOT BE DISCLOSED, COPIED AND OR PUBLISHED WITHOUT THE WRITTEN CONSENT OF CHALFANT MANUFACTURING COMPANY.

FILENAME: CDWMTB620		50 Pearl Rd, Brunswick, OH. 44212 Phone: (800) 365-0228 Fax: (330) 273-8149 www.chalfantcabletray.com	ASSEMBLY CONNECTOR
SCALE: AS NOTED			
DRAWN: J.A.B.	02/20/01	PART NO. : AS IN TABLE	DRAWING NO. : WMTB620
APPROVED:	C.D.: 0150		
REV.		SHEET 1 OF 1	