

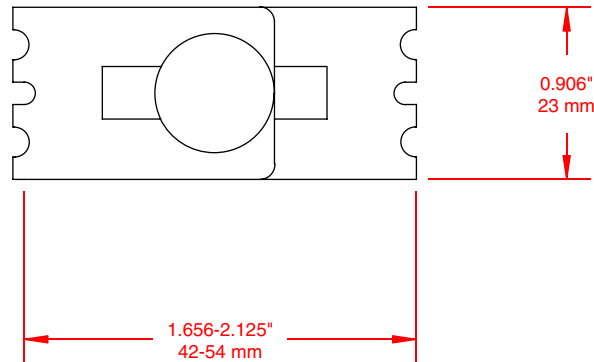
PRODUCT SPECIFICATIONS:

PART NUMBER	FINISH
WMTB201S	ELECTRO-GALVANIZED
WMTB201G	HOT DIPPED
WMTB201T	STAINLESS STEEL 304
WMTB201Z	STAINLESS STEEL 316



RECOMMENDING MOUNTING:

1. FOR MAKING FIELD CREATED BEND ELEMENTS
2. (WMSBKIT612S) BOLT KIT INCLUDED.



THIS DOCUMENT CONTAINS PROPRIETARY INFORMATION AND IS THE PROPERTY OF CHALFANT MANUFACTURING COMPANY. THE CONTENTS OF THIS DOCUMENT SHALL NOT BE DISCLOSED, COPIED AND OR PUBLISHED WITHOUT THE WRITTEN CONSENT OF CHALFANT MANUFACTURING COMPANY.

FILENAME: CDWMTB201		 50 Pearl Rd, Brunswick, OH. 44212 Phone: (800) 365-0228 Fax: (330) 273-8149 www.chalfantcabletray.com	<p align="center">EXPANDING SPLICE CONNECTOR</p>
SCALE: AS NOTED			
DRAWN: J.A.B.	01/22/01	PART NO. : AS IN TABLE	DRAWING NO. : WMTB201S
APPROVED:	C.D.: 0151		
REV.		SHEET 1 OF 1	