

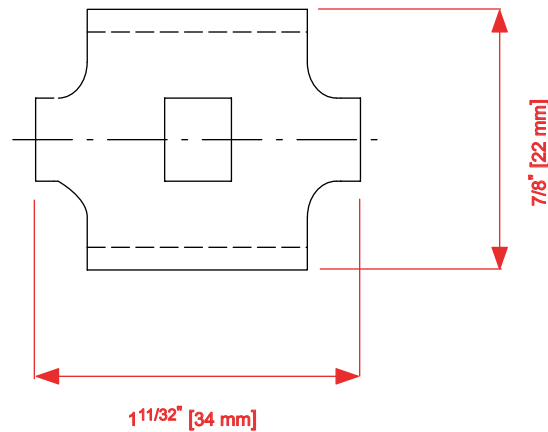
PRODUCT SPECIFICATIONS:

PART NUMBER	FINISH
WMBC250S	ELECTRO-GALVANIZED
WMBC250G	HOT DIPPED
WMBC250T	STAINLESS STEEL 304
WMBC250Z	STAINLESS STEEL 316



RECOMMENDING MOUNTING:

1. FOR MOUNTING WIRE MESH CABLE TRAY TO WALL OR SUSPENDED SUPPORT BRACKETS.
2. (WMSBKIT620) BOLT KIT INCLUDED.



THIS DOCUMENT CONTAINS PROPRIETARY INFORMATION AND IS THE PROPERTY OF CHALFANT MANUFACTURING COMPANY. THE CONTENTS OF THIS DOCUMENT SHALL NOT BE DISCLOSED, COPIED AND OR PUBLISHED WITHOUT THE WRITTEN CONSENT OF CHALFANT MANUFACTURING COMPANY.

FILENAME: CDWMBC250		 50 Pearl Rd, Brunswick, OH. 44212 Phone: (800) 365-0228 Fax: (330) 273-8149 www.chalfantcabletray.com	BOLT ASSEMBLY
SCALE: AS NOTED			
DRAWN: J.A.B.	01/22/01	PART NO. : AS IN TABLE	DRAWING NO. : WMBC250
APPROVED:	C.D.: 0151		
REV.	SHEET 1 OF 1		