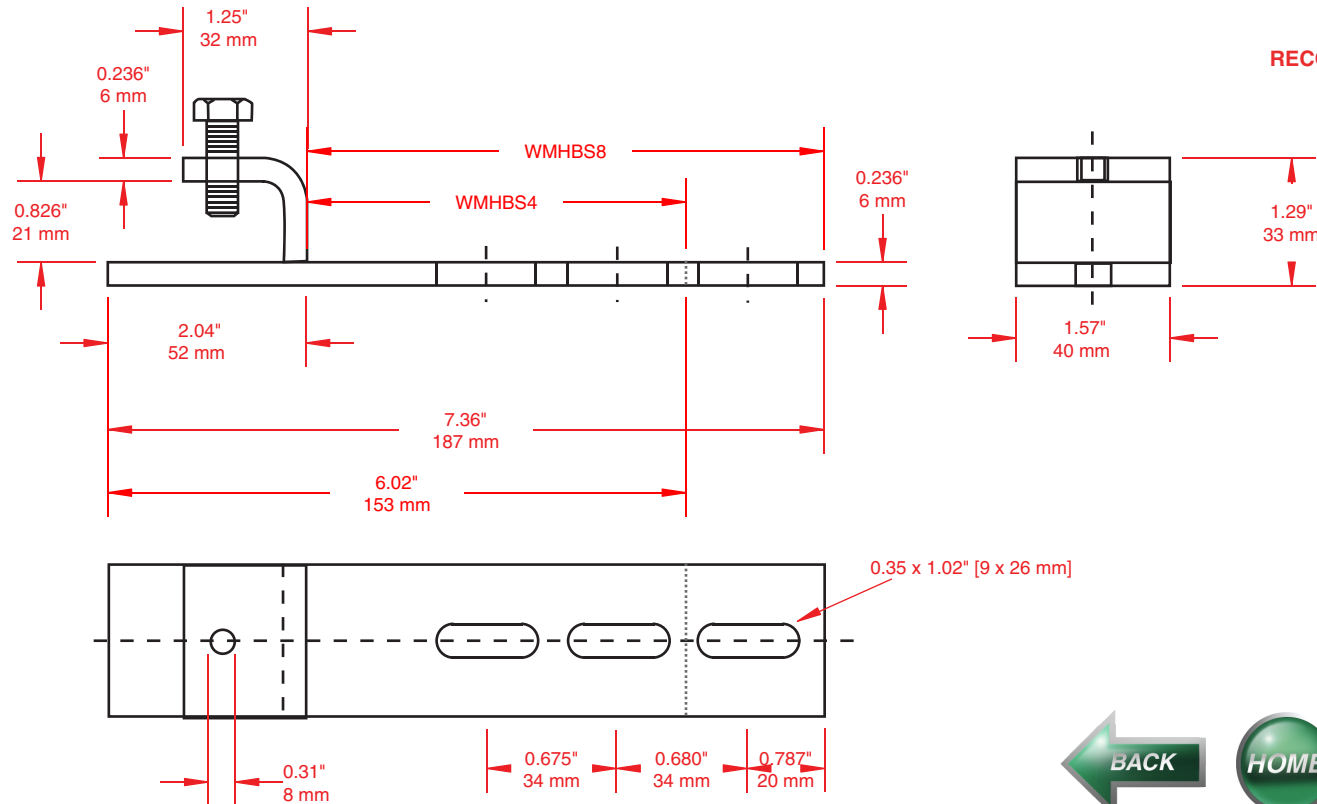


**PRODUCT SPECIFICATIONS:**

PART NUMBER	FINISH	For Tray Size
WMHBS4G	HOT DIPPED	4-6" [100-150mm]
WMHBS4T	STAINLESS STEEL 304	4-6" [100-150mm]
WMHBS8G	HOT DIPPED	8" [200mm]
WMHBS8T	STAINLESS STEEL 304	8" [200mm]



**RECOMMENDING MOUNTING:**

1. FOR MOUNTING CABLE TRAY TO I BEAMS.



THIS DOCUMENT CONTAINS PROPRIETARY INFORMATION AND IS THE PROPERTY OF CHALFANT MANUFACTURING COMPANY. THE CONTENTS OF THIS DOCUMENT SHALL NOT BE DISCLOSED, COPIED AND OR PUBLISHED WITHOUT THE WRITTEN CONSENT OF CHALFANT MANUFACTURING COMPANY.

FILENAME: CDWMHBS		 50 Pearl Rd, Brunswick, OH. 44212 Phone: (800) 365-0228 Fax: (330) 273-8149 www.chalfantcabletray.com
SCALE: AS NOTED		
DRAWN: J.A.B.	01/22/01	PART NO.: <b>AS IN TABLE</b>
APPROVED:	C.D.: 0151	
REV.		
SHEET 1 OF 1		DRAWING NO.: WMHBS